



GMT MONTHLY MEMBERSHIP PROGRESS REPORT

Results as of: 5/31/2020

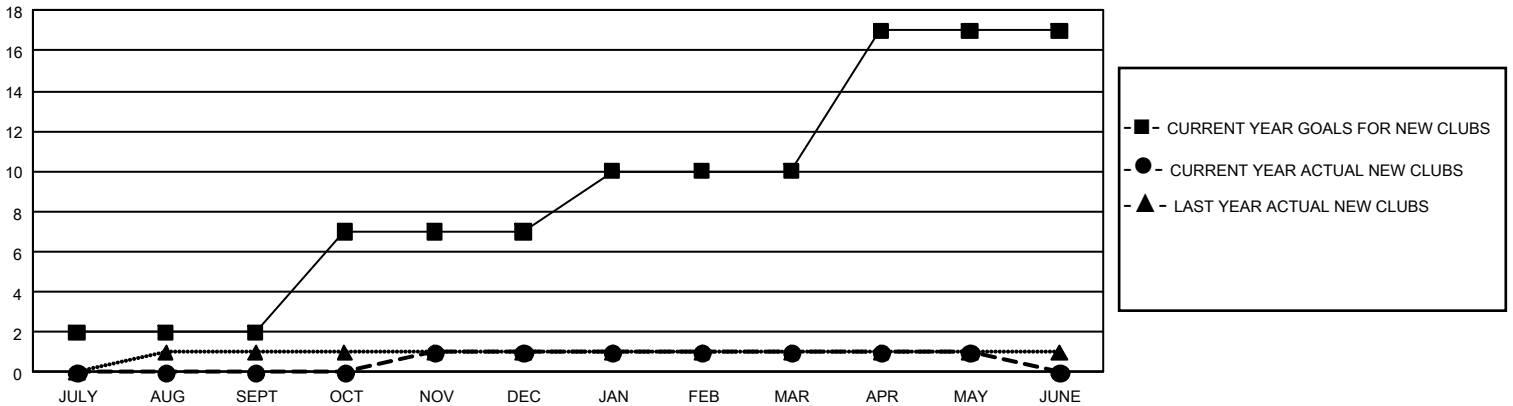
GMT Constitutional Area 1, Group G

GMT: OPEN

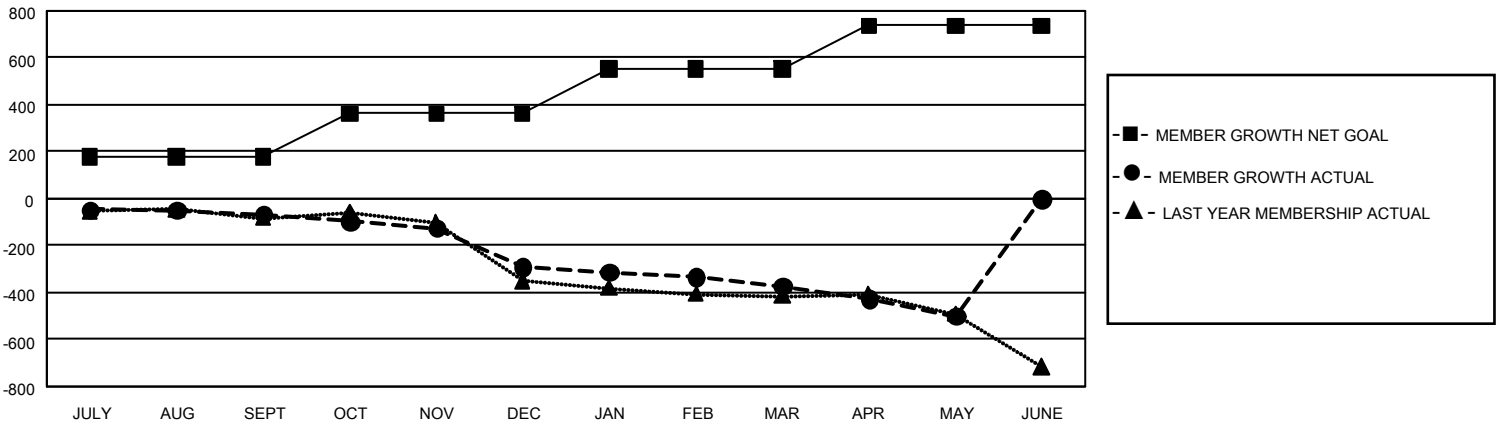
REPORT DOES NOT INCLUDE CLUBS IN UNDISTRICTED AREAS.

| Clubs | | | | Members | | | |
|-----------------------|---------------|-----------|---------------|-----------------------|------------------------|----------------------|--|
| RESULTS FOR 2019-2020 | | | | RESULTS FOR 2019-2020 | | | |
| QUARTER | NEW CLUB GOAL | NEW CLUBS | DROPPED CLUBS | QUARTER | MEMBER GROWTH NET GOAL | MEMBER GROWTH ACTUAL | DROPPED MEMBERS ACTUAL (including transfers) |
| JULY/AUG/SEPT | 6 | 0 | 3 | JULY/AUG/SEPT | 531 | 244 | 271 |
| OCT/NOV/DEC | 15 | 1 | 6 | OCT/NOV/DEC | 555 | 259 | 451 |
| JAN/FEB/MAR | 9 | 0 | 2 | JAN/FEB/MAR | 567 | 263 | 320 |
| APR/MAY/JUNE | 21 | 0 | 0 | APR/MAY/JUNE | 558 | 43 | 160 |

GOALS AND ACTUAL NEW CLUBS CUMULATIVE



GOALS AND ACTUAL MEMBERS CUMULATIVE



| | | | |
|---|--|---------------------------------|----------------|
| DROPPED CLUBS: 11 | 279 CLUBS OF 591 ADDED 1 OR MORE NEW MEMBERS | <u>GENDER DISTRIBUTION</u> | |
| <u>DROPPED MEMBERS</u> | | MALE | 9,306 (70.32%) |
| DECEASED | 191 | FEMALE | 3,928 (29.68%) |
| CLUB CANCELLED | 48 | TOTAL FAMILY UNIT MEMBERS 2,765 | |
| OTHER | 963 | | |
| TOTAL | 1,202 | | |
| CLICK HERE FOR CUMULATIVE MEMBERSHIP DATA | | | |
| | | | |